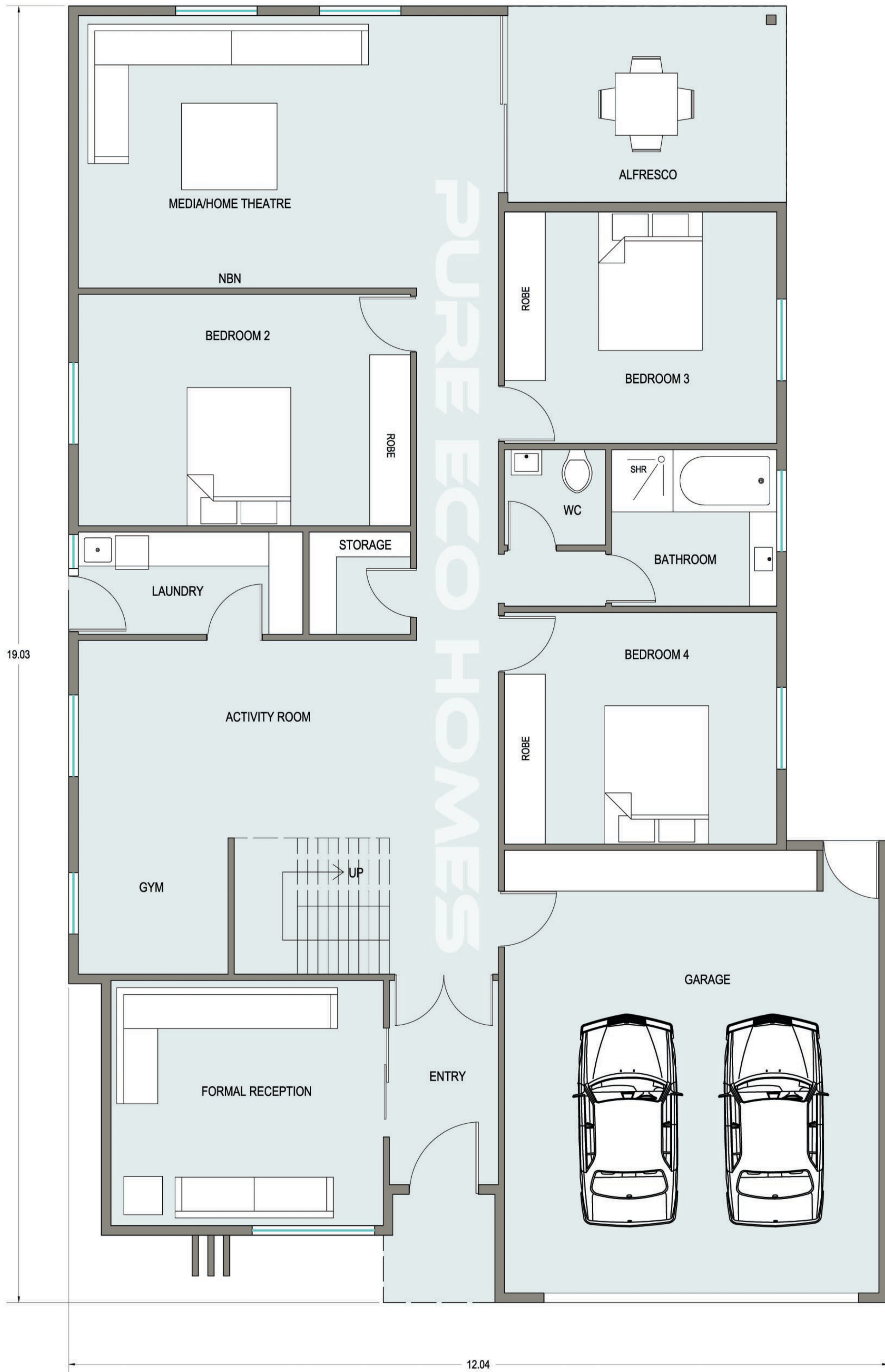


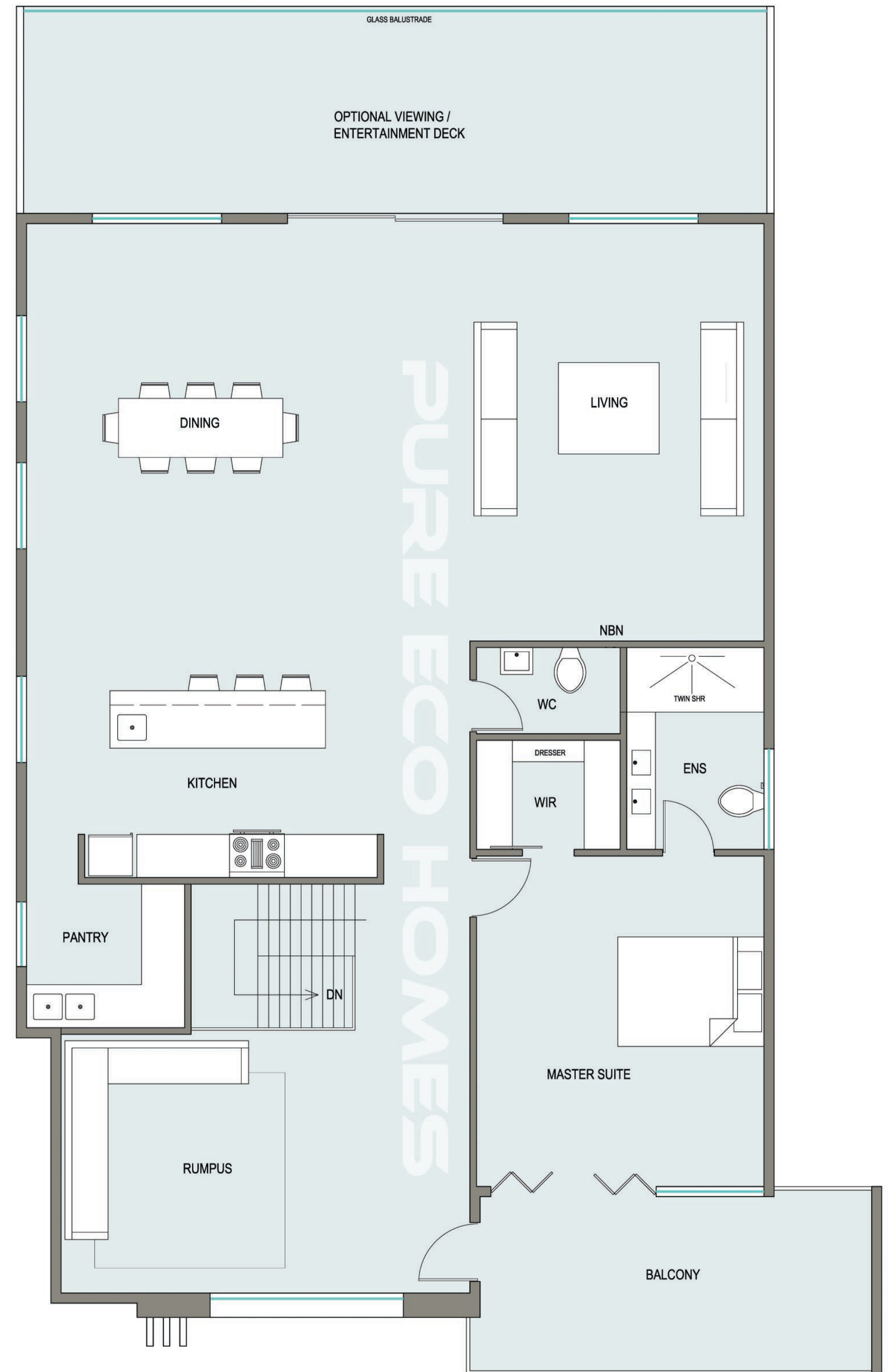
MELBOURNIAN 40

REVERSE LIVING

BUILDING AREA	
House Area:	303.9m ² (32.52sq.)
Garage Area:	39.00m ²
Other Areas:	31.3m ²
Total Area:	374.2m ² (40.04sq.)
House Length:	19.0m
House Width:	12.0m
Min. Block Width:	13.5m



GROUND FLOOR PLAN



FIRST FLOOR PLAN

PLAN

DISCLAIMER - © Pure Eco Homes Pty Ltd. All rights reserved. No reproduction allowed.

Any Designs, Photographs, Artists impressions and Plans depicted here are for presentation purposes and are indicative only. The final colours, materials, fixtures and fittings may vary from any depicted and may change at any time without prior notice or correction to this brochure, pamphlet or web screenshot, which does not form any part of a Pure Eco Homes Construction Contract. Consult your individual contract for the final specifications. Note that we prosecute every infringement of plan copyright to the full value of the home price plus damages. Please respect our intellectual property. Thank you.

Reward of A\$1000 for information leading to a successful prosecution for an infringement or plagiarism of PURE intellectual property or design.